

RoHand II



Owners Manual



Manufactured by:

Fisher's Sprayer Mfg, LLC

www.harvestpromfg.com/rohand-ii

717-768-7619

25 Old Leacock Rd.

Ronks, Pa. 17571

Scan here to access assembly instructions



▶ SCAN ME

Storage Shelves

Solar Panel

Canopy



Drive & Steering Pedals

Battery, Solar Charger & Variable Speed Control

Lever to engage motor

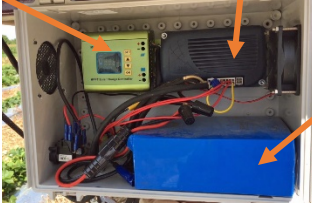
Battery should be stored indoors during the winter. A charger is included in case the solar panel does not provide sufficient charging.

Safety: The operator assumes responsibility for safety during operation of this machine. A reasonable, common sense approach to the safe operating the RoHand II will virtually eliminate accidents that could result in injury.

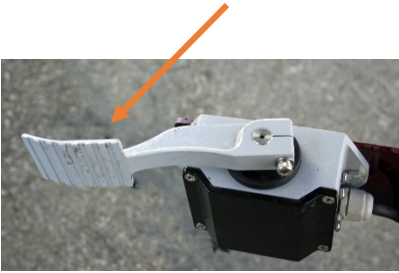
Solar Charge Controller

Variable Speed Control

Battery



Push pedal to move



Turn left

Turn right



Be sure to adjust straps and pads for optimum comfort of each individual operator.

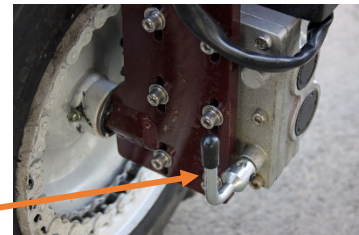




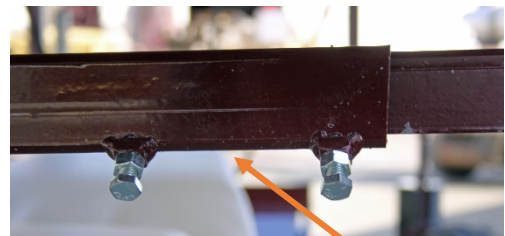
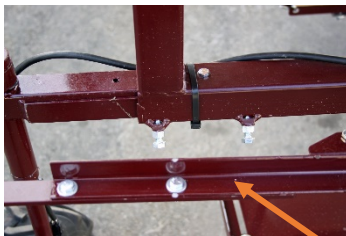
Control switches for lights, power and direction.



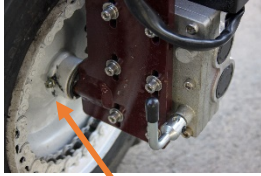
Turn lever to the side to engage motor.



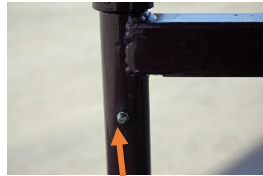
Turn lever upright to disengage motor.



To adjust wheel width spacing, remove five (5) bolts on each side in the front of machine and two (2) bolts on each side in the rear of machine.



One grease Zerks inside machine of each wheel



One grease zerk on each of machine



Hard to find grease zerk at rear of machine

Warranty Coverage

Fisher's Sprayer Manufacturing, LLC hereby provides a limited one (1) year warranty on the product manufactured by Fisher's Sprayer Manufacturing, LLC that such products shall be free from manufacturers defects in any of the products components in the twelve (12) month period following the original date of purchase from the authorized dealer (the warranty period). Electronic components shall be covered by warranty for six (6) months from date of purchase.

Fisher's Sprayer Manufacturing, LLC HEREBY EXCLUDES AND DISCLAIMS ANY AND ALL OTHER WARRANTIES, STATUTORY, EXPRESS OR IMPLIED, INCLUDING WITHOUT LIMITATION ANY IMPLIED WARRANTY OF MECHATNABILITY OR FITNESS FOR ANY PARTICULAR PRUPOSE AND WARRANTY ARISING FROM USAGE OF TRADE OR COURSE OF DEALING. Defective components will be repaired or replaced at the discretion of the manufacturer. This product warranty is limited to INCIDENTAL OR CONSEQUENTIAL DAMAGES OF ANY KIND. This product warranty covers the purchaser of this product and any other s who own it during the warranty period. To retain the proof of warranty the product must be operated and maintained as set forth by it's owner's manual. For warranty service, please have a copy of the purchase invoice available.

Warranty void if:

1. The product has been subject to, in the opinion of Fisher's Sprayer Manufacturing, LLC, negligent handling, misuse, and accident or if the instructions in the owner's manual were not completely followed.
2. The product's components have been altered in any manner, not installed per the Manufacturer's instructions, or repairs have taken place with unapproved parts.

Obtaining Warranty Service:

All product warranty claims must be made through an authorized Fisher's Sprayer Manufacturing, LLC dealer. All warranty claims must be submitted with an invoice or a proof of purchase that denotes the purchase date and place of purchase. If you have any questions or comments concerning this warranty, please contact Fisher's Sprayer Service, LLC or an authorized Fisher's Sprayer Manufacturer, LLC dealer.

Fisher's Sprayer Manufacturing, LLC

25 Old Leacock Rd.

Ronks, Pa. 17572

717-768-7619